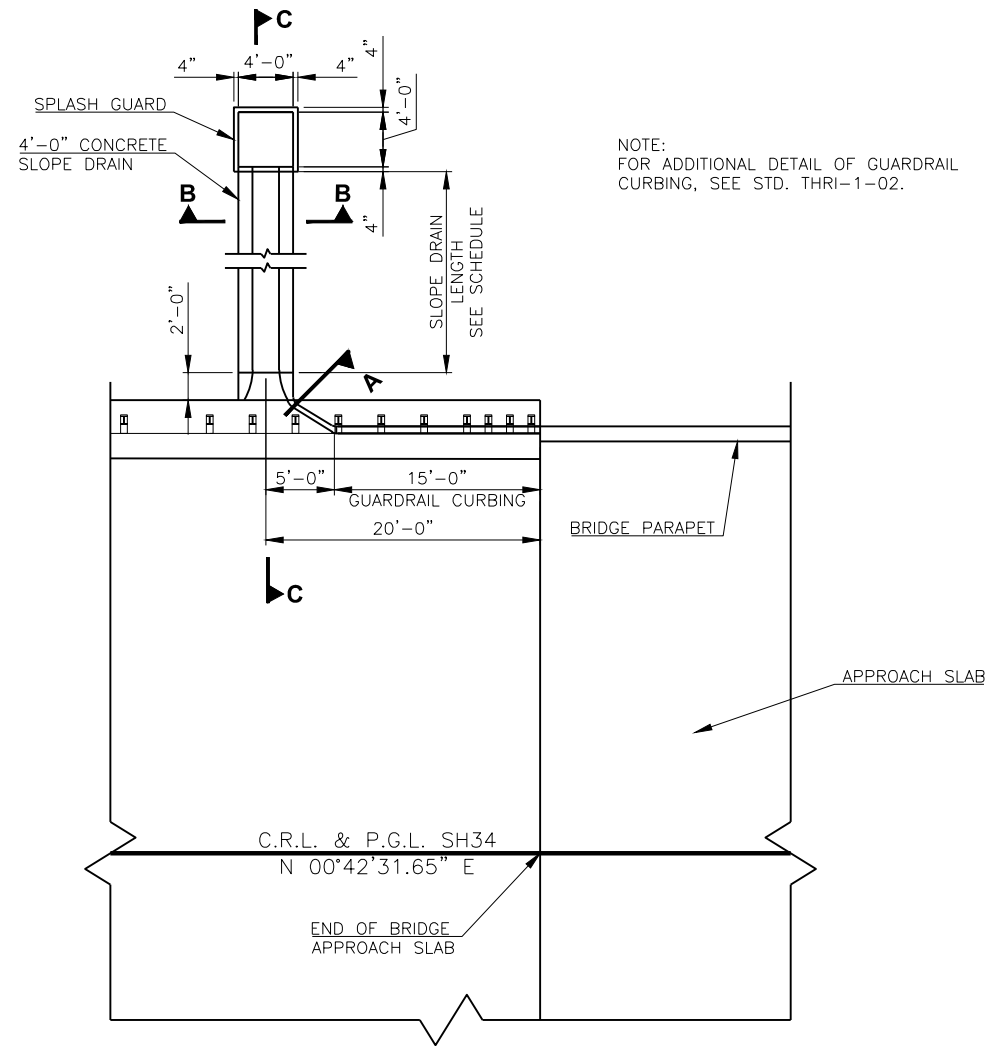
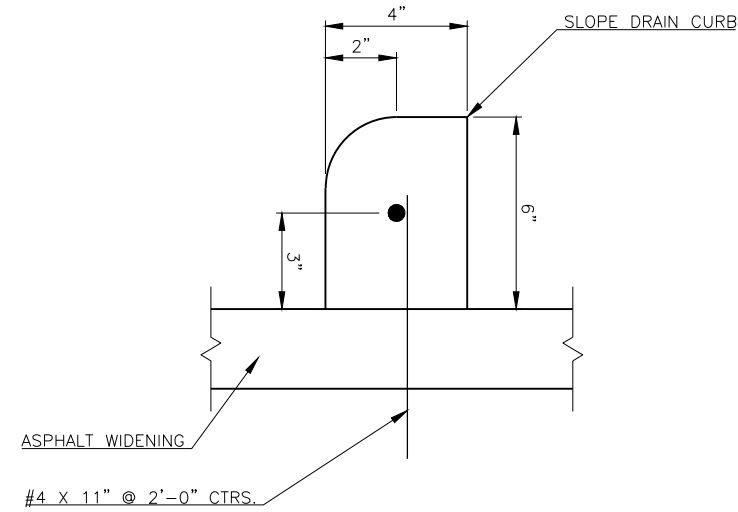


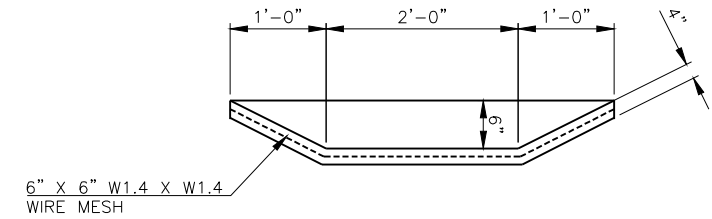
DESCRIPTION	REVISIONS	DATE



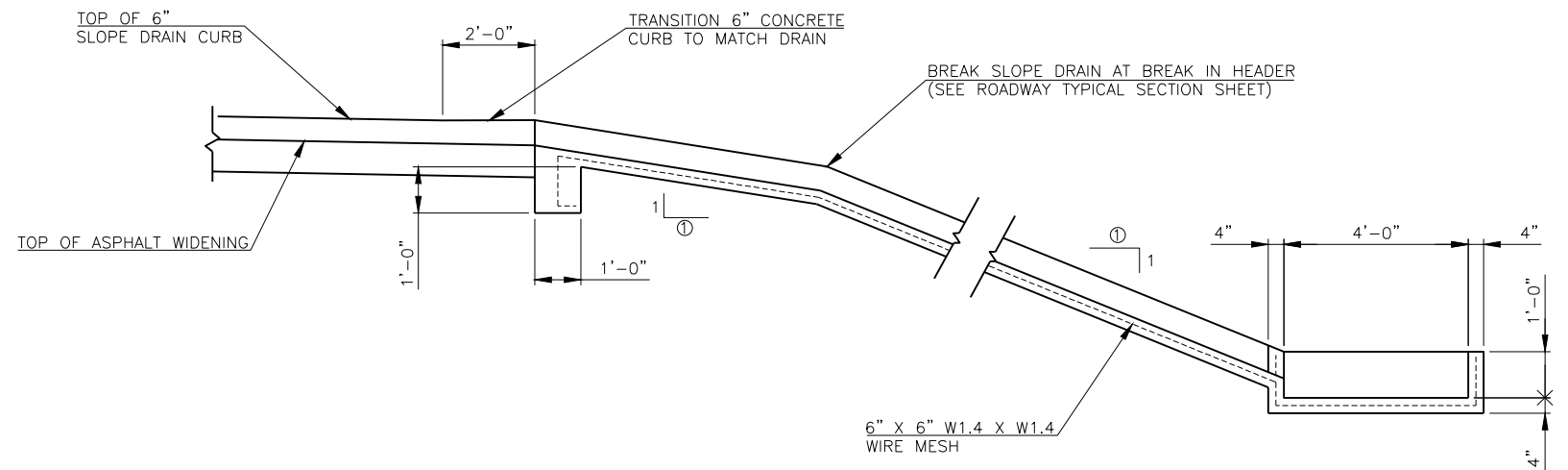
NOTE:
FOR ADDITIONAL DETAIL OF GUARDRAIL CURBING, SEE STD. THRI-1-02.



SECTION A



SECTION B-B



SECTION C-C

NOTE:
FOR DETAILS OF ASPHALT ROADWAY AND WIDENING SEE ROADWAY PLANS.

SLOPE DRAINS, SPLASH BASINS AND SLOPE DRAIN CURB SHALL BE CONSTRUCTED USING CLASS 'C' CONCRETE AS SHOWN ON THIS SHEET. LENGTH OF SLOPE DRAIN SHOWN IN THE PLANS IS ESTIMATED. ACTUAL LENGTH TO BE DETERMINED IN THE FIELD BY THE ENGINEER. ALL COSTS OF THE SLOPE DRAINS, SPLASH BASINS AND SLOPE DRAIN CURBS INCLUDING REINFORCEMENT SHALL BE INCLUDED IN THE BRIDGE PAY ITEM FOR "CLASS 'C' CONCRETE".

① SLOPE TO MATCH SLOPE OF HEADER

SLOPE DRAINS SCHEDULE	
SLOPE DRAIN	ESTIMATED LENGTH
ABUTMENT NO. 1 - WEST	30'-0"
ABUTMENT NO. 1 - EAST	33'-0"
ABUTMENT NO. 2 - WEST	35'-0"
ABUTMENT NO. 2 - EAST	35'-0"

SLOPE DRAIN QUANTITIES		
ITEM	UNITS	TOTAL
CLASS C CONCRETE	C.Y.	9.3

THIS DRAWING IS PRELIMINARY IN NATURE. IT IS NOT A FINAL SIGNED AND SEALED DRAWING

DESIGN	J.W.H.	SH34 OVER N. PERSIMMON CREEK	WOODWARD COUNTY
DRAWN	Z.M.B.	BRIDGE A	
CHECKED	J.W.H.	SLOPE DRAIN DETAILS	
APPROV.	T.A.C.		
SQUAD	CEC		
		JOB PIECE NO. 28827(04)	SHEET NO. 38